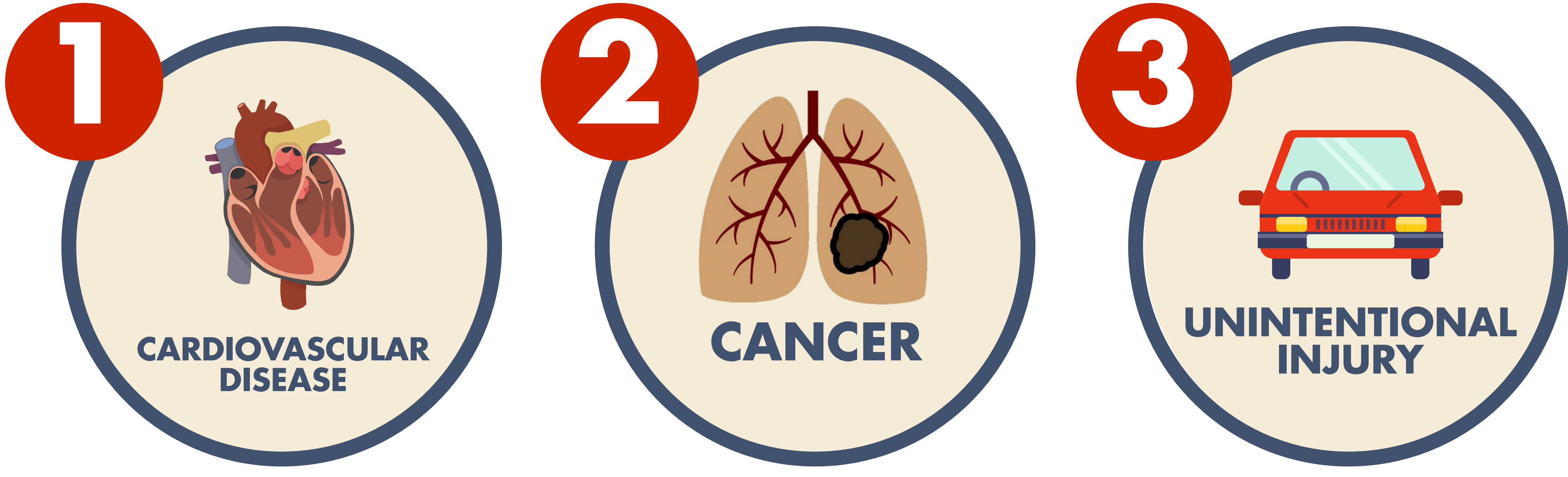


LEADING CAUSES OF DEATH IN GREY BRUCE

TOP 3 CAUSES OF DEATH IN GREY BRUCE 2003-2012



CARDIOVASCULAR DISEASE

Deaths due to cardiovascular disease (CVD) include (but are not limited to) heart attack, stroke, and heart failure.

30%
of local
deaths are
due to CVD

493
local deaths
in 2012

Mortality rate
decreased by
36%
between 2003
and 2012



Risk of dying from CVD
27% higher in Grey
Bruce than Ontario



Risk 50% greater
among males

CANCER

The cancers that cause the most deaths in Grey Bruce are lung and bronchial cancer, colorectal cancer, breast cancer (among females), and prostate cancer (among males).

26%
of local
deaths are
due to cancer

401
local deaths
in 2012

Mortality rate
decreased by
12%
between 2003
and 2012

UNINTENTIONAL INJURIES

Falls are the greatest cause of unintentional injury deaths in Grey Bruce, followed by motor vehicle collisions, and accidental poisonings.

4%
of local
deaths
are due to
unintentional
injuries

62
local deaths
in 2012

TOP 3 SPECIFIC CAUSES OF DEATH BY SEX AND AGE GROUP, GREY BRUCE 2008-12

MALES



1. Heart disease (ischaemic) ↑
2. Lung cancer
3. Cerebrovascular disease (stroke)

FEMALES



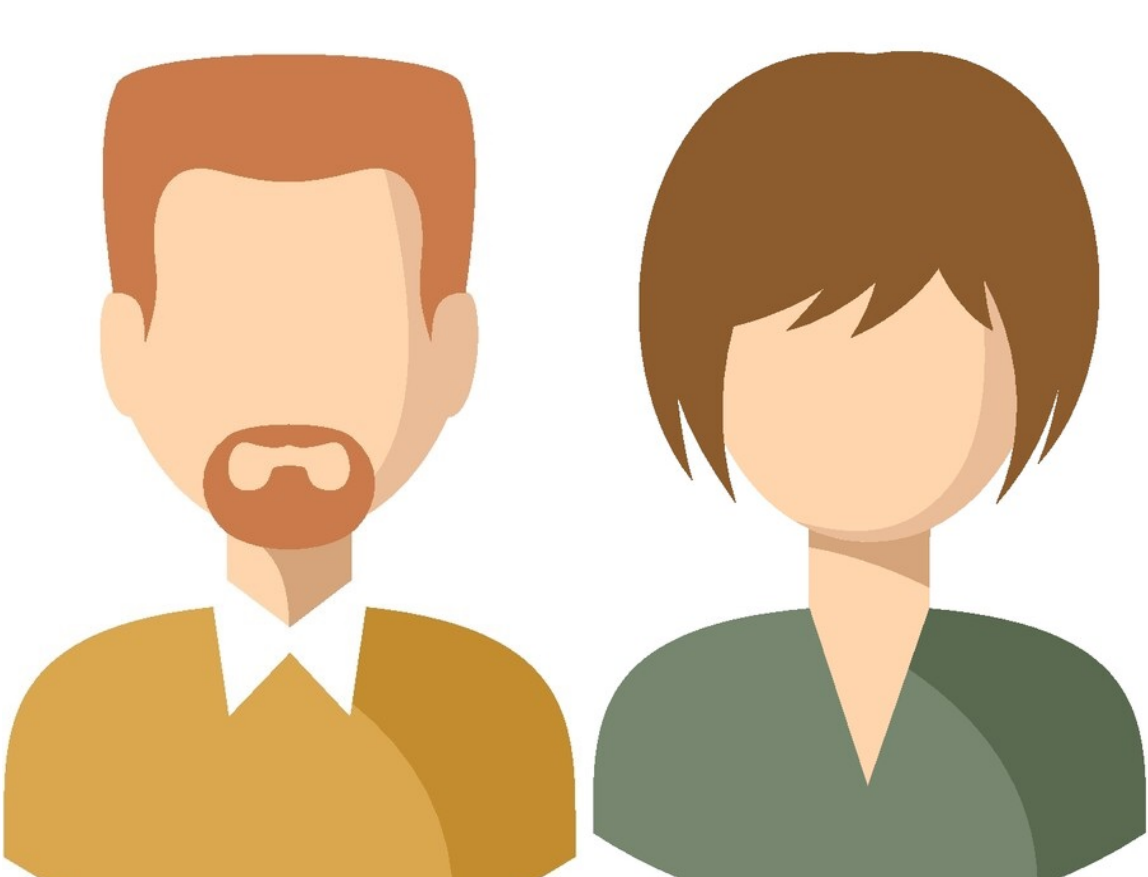
1. Heart disease (ischaemic) ↑
2. Dementia & Alzheimer disease
3. Cerebrovascular disease (stroke)

15-24



1. Motor vehicle collisions ↑
2. Suicide
3. Too low to report

25-44



1. Suicide ↑
2. Motor vehicle collisions ↑
3. Accidental poisoning

45-64



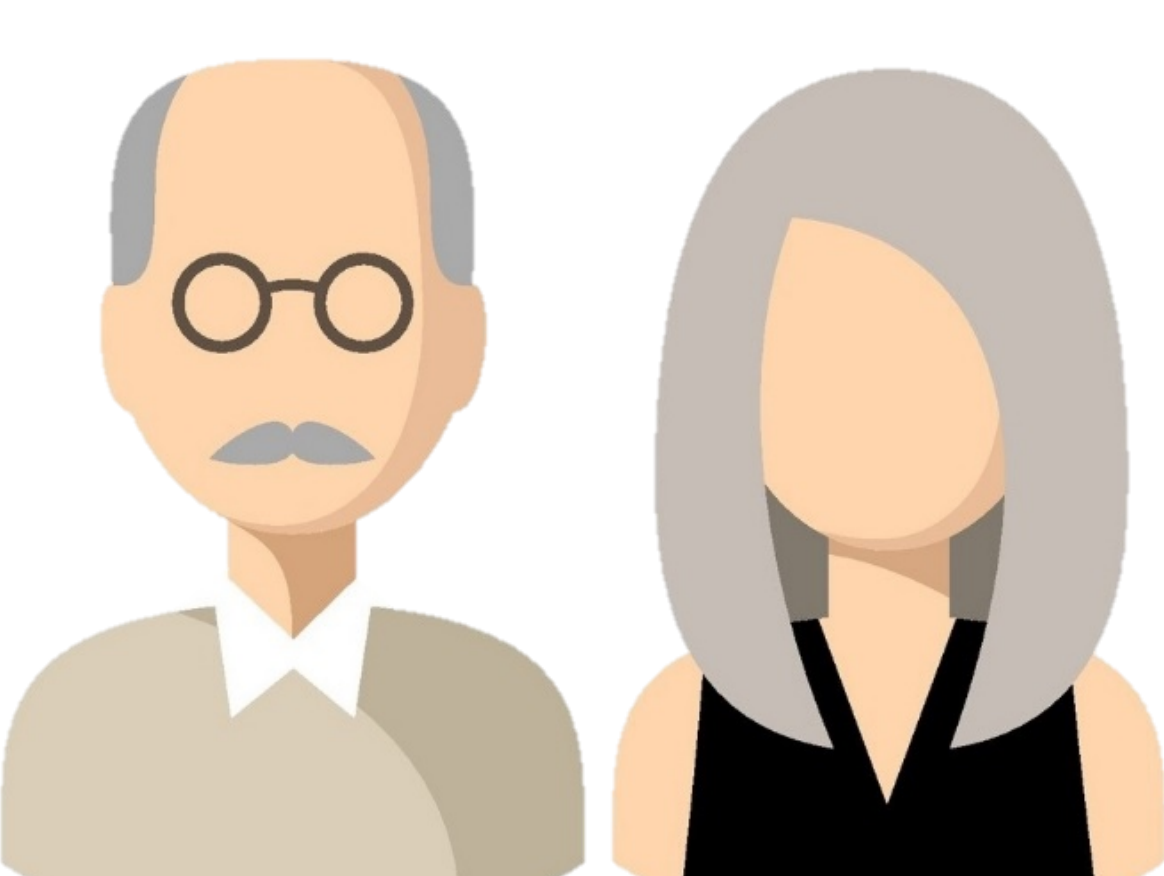
1. Heart disease (ischaemic) ↑
2. Lung cancer ↑
3. Cirrhosis & liver disease ↑

65-74



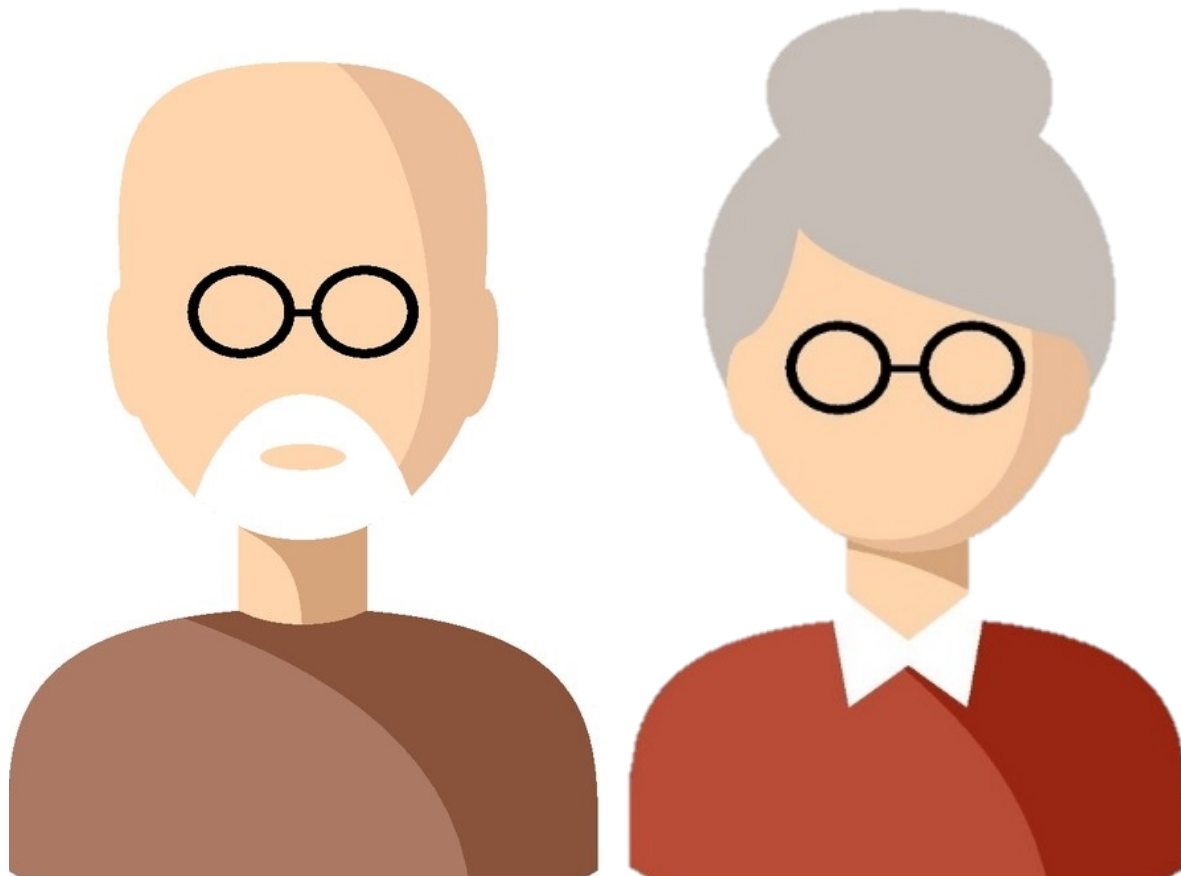
1. Heart disease (ischaemic)
2. Lung cancer
3. Colorectal cancer

75-84



1. Heart disease (ischaemic)
2. Lung cancer
3. Dementia & Alzheimer disease

85+



1. Heart disease (ischaemic)
2. Dementia & Alzheimer disease
3. Cerebrovascular disease (stroke)

↑ Grey Bruce rate significantly higher than Ontario rate

Note: Local rates of deaths among children under 15 years are too low to report

TERMS: **Ischemic heart disease:** also called coronary heart disease (CHD) or coronary artery disease, It occurs when one or more of the coronary arteries becomes narrow or blocked. This can result in heart attack or cardiac arrest (*Heart and Stroke Foundation of Canada*).
Cerebrovascular disease: a general term for disturbances of blood flow through the brain. The vast majority of deaths due to cerebrovascular disease are due to stroke (*World Health Organization*).

SOURCE: Ontario Mortality Data 2000–2012, Ontario Ministry of Health and Long-term Care, IntelliHEALTH Ontario, Date Extracted: November 26, 2018.

